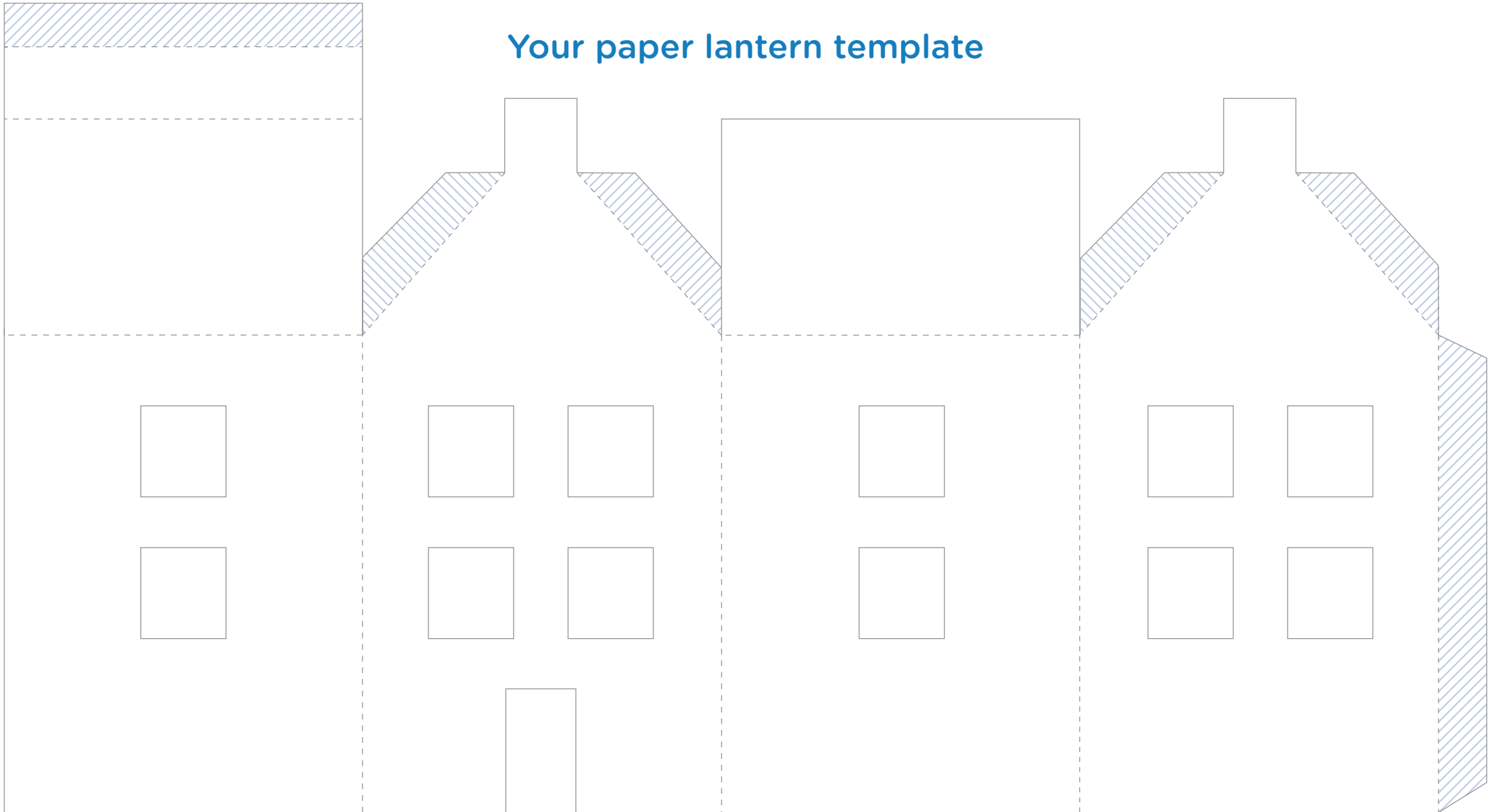


Your paper lantern template



INSTRUCTIONS

1. Carefully cut-out the template. Avoid dotted lines.
2. Use scissors or a blade to cut out the windows.
3. Fold all four sides of the house towards one another
4. Glue tabs for roof and side wall and stick together.
5. Add a LED tea light and enjoy your paper lantern.

FIRE SAFETY WARNING: PLEASE REFRAIN FROM USING A NAKED FLAME INSIDE PAPER LANTERNS



www.librio.com